

MATTHEW JAMES

Residential Sales • Lettings • Management



Holsworthy Square Elm Street, Holborn, WC1X 0BJ

Asking Price £425,000

A well proportioned third floor one bedroom mansion flat with gated entrance and a private central courtyard (Holsworthy Square). The flat requires updating throughout but does benefit from double glazed wood sash windows. The property is located just off of Grays Inn Road and is a short walk away from Chancery Lane tube and the green open spaces of Coram's Fields. Offered Chain Free. Mixed Tenure Block. New 250 Year Lease.

Gated Courtyard Entrance

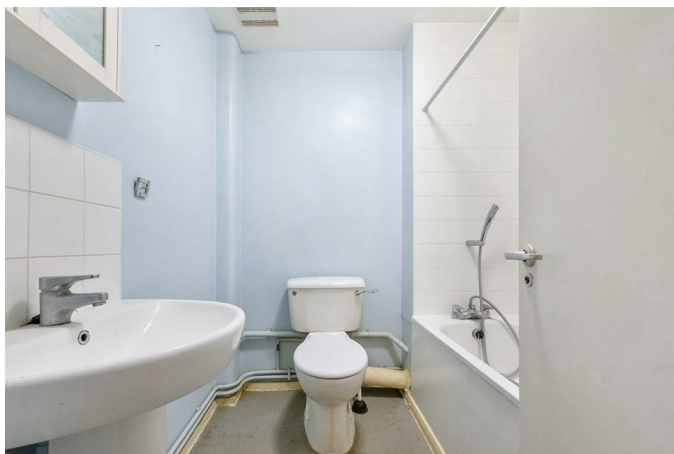
Third Floor

Entrance Hall

Living Room



Bathroom



Communal Private Gardens



Kitchen



Double Bedroom

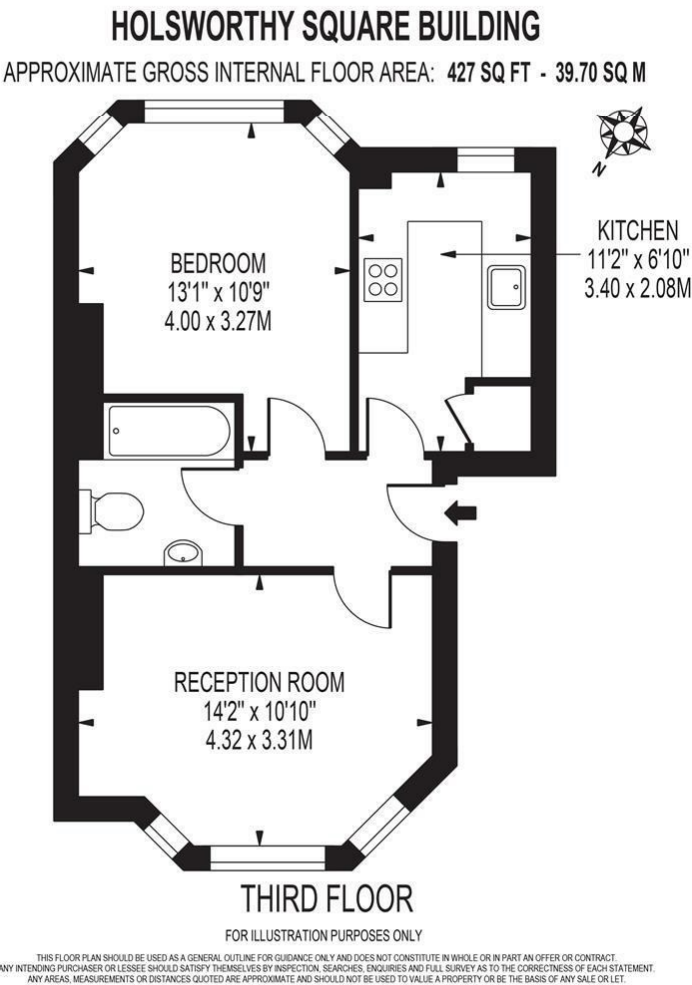


Additional Information



Camden Council Tax Band D
Service Charge £1167.29 per annum
Ground Rent - Zero
New 250 Year Lease
Mixed Tenure Block

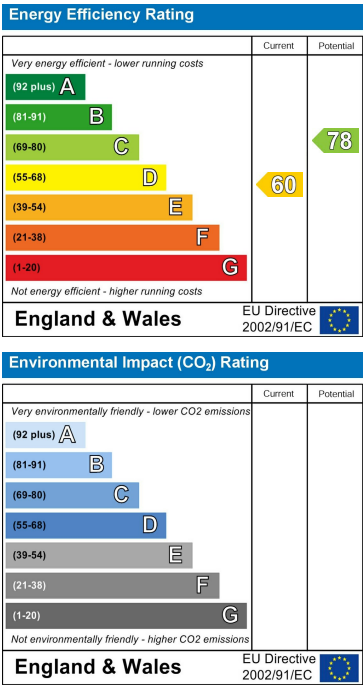
Floor Plan



Area Map



Energy Efficiency Graph



These particulars, whilst believed to be accurate are set out as a general outline only for guidance and do not constitute any part of an offer or contract. Intending purchasers should not rely on them as statements of representation of fact, but must satisfy themselves by inspection or otherwise as to their accuracy. No person in this firms employment has the authority to make or give any representation or warranty in respect of the property.